

XIC35GU10-L

P R I O R I

3-1/2" Series - PRIORI

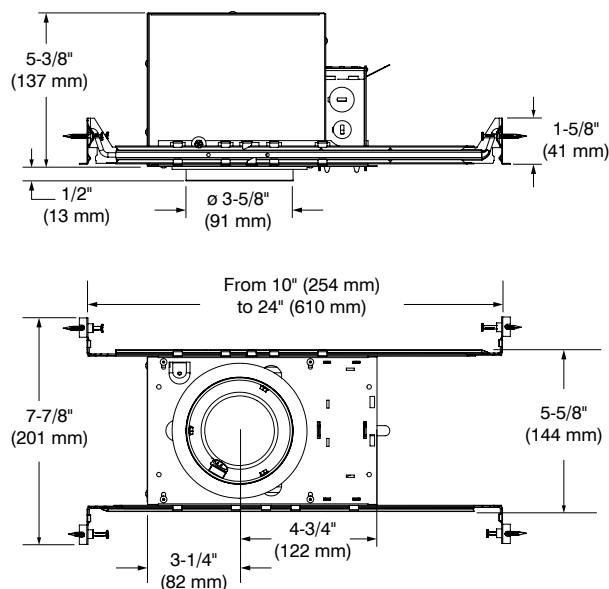
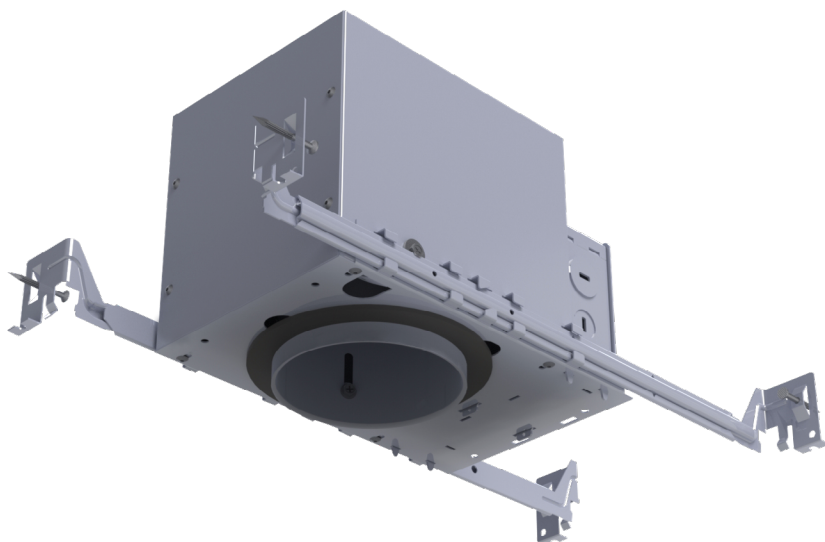
Project _____

Notes _____

Fixture type _____

Date _____

Insulated Box IC Air Tight GU10 Housing



SPECIFICATIONS

HOUSING DETAILS	Galvanized Steel Approved for installation in insulated ceiling with direct contact to insulating material (except polyurethane) Below-ceiling accessible		
SOCKET	GU10; Twist and Lock		
JUNCTION BOX	Convenient 24 ³ in 1/2" and 3/4" romex wiring knockouts		
MOUNTING	<p>Cutout diameter: ϕ 3-3/4"</p> <p>Can fit in ceilings of 1/2" (13 mm) up to 1-3/8" (35 mm) thick Requires a 6" (152 mm) clearance beyond the ceiling material No light leakage</p> <p>Adjustable Mounting Bars</p> <ul style="list-style-type: none"> • 10" (254 mm) to 24" (610 mm) to fit in most ceiling structures • Contains integral nail • Hanger fit onto T-bar spline for quick alignment 		
SOURCE	LED GU10 Lamp 10W MAX		
COMPATIBLE TRIMS	X3501 X3502 X3503	X3504 X3505 X3507	X3508
VOLTAGE	120V/277V		

CONTRASTE

SPECIFICATION SHEET

XIC35GU10-L

3-1/2" Series - PRIORI

P R I O R I

Insulated Box IC Air Tight GU10 Housing

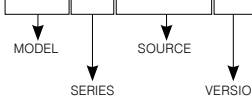


SPECIFICATIONS (CONT'D)

CERTIFICATION	ETL listed for damp locations and wet with shower trim
WARRANTY	1 year limited warranty

CODIFICATION EXAMPLE

XIC35GU10-L



ORDERING CODES

MODEL	SERIES	SOURCE	VERSION
XIC	35	GU10	-L
XIC Insulated Box Housing	35 3-1/2" Series	GU10 GU10	-L