

# T4200

3" Series

## Beveled Trim

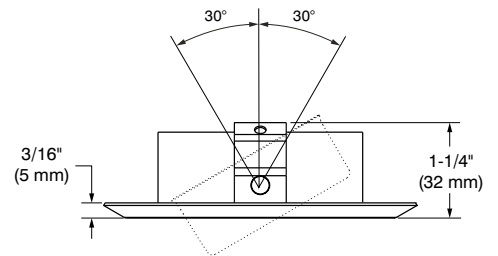
Project	
Notes	
Fixture Type	
Date	



T4200-15 (illustrated)

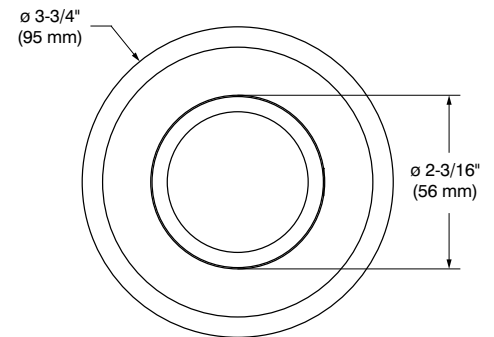
### SPECIFICATIONS

TRIM	Powder coat painted or plated die-formed steel. Different finishes available. Painted finishes available with Marine Grade option.
LAMP	<b>MR16</b> 20-35W  This product was designed for MR16 halogen lamps. If you want replace the MR16 lamp by an equivalent LED lamp, please refer regularly to the lamp manufacturer compatibility list.
CEILING CUTOUT	<b>ø 3-1/4" (82 mm)</b>
CERTIFICATION	cULus <b>E174023</b> for <b>damp locations</b>
WARRANTY	1 year for standard finishes, 2-year on "Marine Grade" finish.

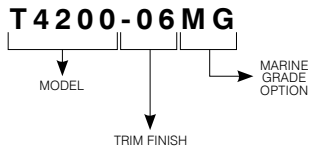


### COMPATIBLE HOUSINGS

	Remodel Housing	New Construction Housing	Insulated Housing
HALOGENS	<b>MR16 GU 5.3</b> 20W IT4000CE IT4000CM  <b>MR16 GU 5.3</b> 35W IT4000E IT4000M	<b>MR16 GU 5.3</b> 35W NW4000E NW4000M	<b>MR16 GU 5.3</b> 20W ISMR4000M ISMR4000M20



# T4200

**3" Series****CODIFICATION EXAMPLE****ORDERING CODES**

MODEL	TRIM FINISHES	MARINE GRADE
<b>T4200</b>		
	<b>-01</b> White	<b>MG</b> (optional)
	<b>-02</b> Black	May be applied on finishes:
	<b>-03</b> Gold Plated 24K	-01, -02, -05, -06, -11 and -15
	<b>-04</b> Chrome	
	<b>-04BR</b> Brushed Chrome	
	<b>-05</b> Architectural Bronze	
	<b>-06</b> Antique Copper	
	<b>-11</b> Matte White	
	<b>-12BR</b> Brushed Nickel	
	<b>-13</b> Satin Nickel	
	<b>-15</b> Metallic Grey	

**MARINE GRADE**

2-year warranty on finish

This option increases the painted finishes resistance by reducing and delaying apparition and propagation of oxidation (ex: rust and others).

MARINE GRADE treatment is recommended for damp to wet locations.

Unless otherwise indicated, trims are for interior use. Also suitable for cold and exterior locations, as in soffits, where fixtures are not subject to direct rain or snow exposure.

**WARNING** – This option is not suitable for salt environments and/or highly corrosive areas such as soffits in coastal regions and natatoriums. Such usage would void warranty on the product.



# CONTRASTE

2018-02  
Revision 1

PRINTED IN CANADA

1009, rue du Parc Industriel  
Lévis (Québec) G6Z 1C5 Canada  
Tel.: 1-888-839-4624  
Fax.: 1-877-839-7057  
contrastelighting.com  
info@contrastelighting.com

© 2018 Contraste Lighting M.L. Inc.  
All rights reserved

Contrast Lighting M.L. Inc. reserves the right to make changes in specifications and/or to discontinue any product at any time without notice or obligation and will not be liable for any consequences resulting from the use of this publication.