

# T3450WK

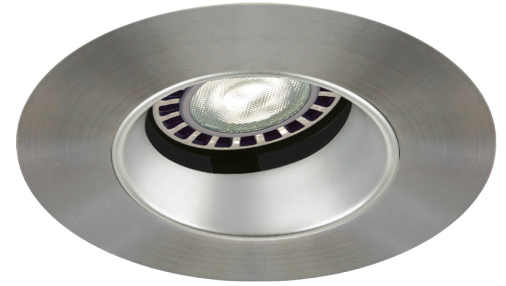
3-1/2" Series

## Very Low Profile Adjustable Regressed Wall Wash Trim

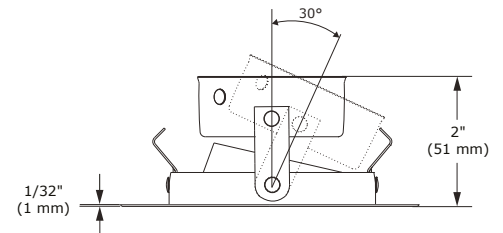
Project	
Notes	
Fixture Type	
Date	

### SPECIFICATIONS

TRIM	Powder coat painted or plated die-formed steel. Different finishes available. Painted finishes available with Marine Grade option.									
LAMPS (maximum wattage)	<b>GU10 LED</b> 9.8W <b>MR16 LED GU 5.3</b> 11.5W <b>PAR16 LED</b> 8W	<b>GU10</b> 50W <b>MR16 GU 5.3</b> 50W								
	If you want to use the dimming option and you use a GU10 or PAR16 LED lamp, please refer regularly to the lamp manufacturer compatibility list.  For MR16 LED lamp usage, please refer to the selected housing specification sheet (see compatible housing list below).  <b>*Use supplied glass lens only with un protected MR16 lamps.</b>									
REFLECTORS	<b>Standard: Anodized Aluminum</b> <b>Options:</b> <table border="0"> <tr> <td><b>Specular</b></td> <td><b>Painted</b></td> </tr> <tr> <td>Black (BK)</td> <td>White (-01)</td> </tr> <tr> <td>Clear (CL)</td> <td>Black (-02)</td> </tr> <tr> <td></td> <td>Matte White (-11)</td> </tr> </table>		<b>Specular</b>	<b>Painted</b>	Black (BK)	White (-01)	Clear (CL)	Black (-02)		Matte White (-11)
<b>Specular</b>	<b>Painted</b>									
Black (BK)	White (-01)									
Clear (CL)	Black (-02)									
	Matte White (-11)									
CEILING CUTOUT	Ø 3-5/8" (92 mm)									
CERTIFICATION	<ul style="list-style-type: none"> <li>cULus <b>E343977</b> for <b>damp locations</b> (for GU10, MR16 and PAR16 LED lamps)</li> <li>cULus <b>E174023</b> for <b>damp locations</b> (for MR16, GU10 halogen lamps)</li> </ul>									
WARRANTY	1 year for standard finishes, 2 years on "Marine Grade" finishes.									

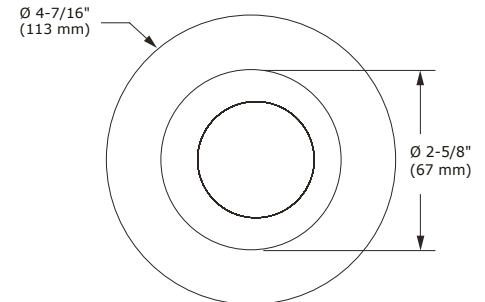


T3450WK-12BR (illustrated)  
(Lamp not included)



### COMPATIBLE HOUSINGS

	IC Air Tight Remodel Housing	IC Air Tight New Construction Housing
LED	Non Available	<b>GU10 LED</b> 9.8W NW3000T-LED  <b>MR16 LED GU 5.3</b> 11.5W NW3000CE-LED NW3000E-LED  <b>PAR16 LED</b> 8W NW3000CA-LED



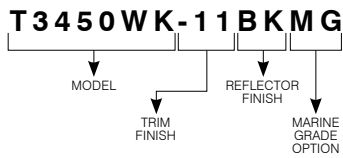
# T3450WK

3-1/2" Series

## COMPATIBLE HOUSINGS (CONT'D)

	Remodel Housing	New Construction Housing	Insulated Housing
HALOGENS	Non Available	<b>MR16 GU 5.3</b> 50W NW3000CE NW3000CM NW3000LE NW3000LM  <b>GU10</b> 50W NW3000LT	<b>GU10</b> 50W ISMR3000T

## CODIFICATION EXAMPLE



## ORDERING CODES

MODEL	TRIM FINISHES	REFLECTOR FINISHES	MARINE GRADE
<b>T3450WK</b>			
<b>T3450WK</b>	<b>-01</b> White <b>-02</b> Black <b>-03</b> 24K Gold Plated <b>-04</b> Chrome <b>-04BR</b> Brushed Chrome <b>-05</b> Architectural Bronze <b>-06</b> Antique Copper <b>-11</b> Matte White <b>-12BR</b> Brushed Nickel <b>-13</b> Satin Nickel <b>-15</b> Metallic Grey	<b>ANODIZED</b> Aluminum (standard)  <b>SPECULAR</b> <b>CL</b> Clear <b>BK</b> Black  <b>PAINTED</b> <b>-01</b> White <b>-02</b> Black <b>-11</b> Matte White	<b>MG</b> (optional) May be applied on finishes: -01, -02, -05, -06, -11 and -15.

## MARINE GRADE

2-year warranty on finish

This option increases the painted finishes resistance by reducing and delaying apparition and propagation of oxidation (ex: rust and others).

MARINE GRADE treatment is recommended for damp to wet locations.

Unless otherwise indicated, trims are for interior use. Also suitable for cold and exterior locations, as in soffits, where fixtures are not subject to direct rain or snow exposure.

**WARNING** – This option is not suitable for salt environments and/or highly corrosive areas such as soffits in coastal regions and natatoriums. Such usage would void warranty on the product.

