

IT2000CM

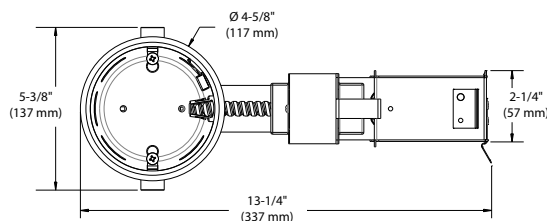
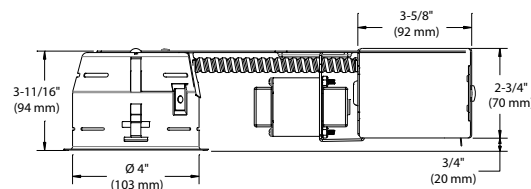
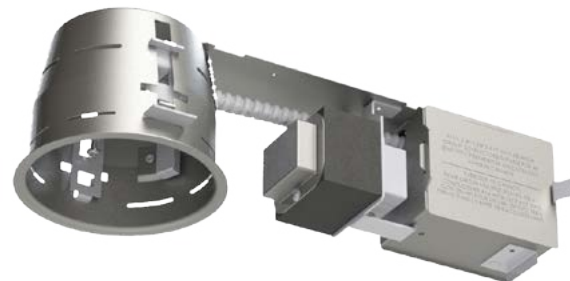
4" 2000 Series

Project _____
 Notes _____
 Fixture Type _____
 Date _____

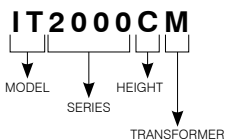
Shallow Remodel Housing with Magnetic Transformer

SPECIFICATIONS

HOUSING DETAILS	Up to 0,051" (1,3 mm) thick galvanized steel housing. Junction box can support up to 10 – 14 gauge wires or 8 – 12 gauge wires. Below-ceiling accessible.			
MOUNTING	Cutout diameter: Ø 4-1/4" (108 mm) Can fit in ceilings from 1/2" up to 1-1/4" (32 mm) thick. Requires a 6-1/4" (159 mm) clearance beyond the ceiling level. Must be installed 3" (73 mm) from any insulating material. Patented hook (PAT#CAN 2,088,648 and #USA 5,377,088) for ease of installation and a perfect fit to ceiling. No light leakage.			
LAMP	MR16 GU 5.3 42W MAX This product was designed for a MR16 halogen lamp. If you want to use dimming and you replace MR16 lamp by an equivalent LED MR16 lamp, please refer regularly to the lamp manufacturer dimmer compatibility list.			
VOLTAGE	IT2000CM: 120 Volts (CAN & U.S.A.) IT2000CM2: 277 Volts (U.S.A.) IT2000CM3: 347 Volts (CAN)			
TRANSFORMER	Magnetic Transformer 120V/12V - 50VA 277V/12V - 50VA 347V/12V - 50VA			
COMPATIBLE TRIMS	R2000 R2051	R2100 R2100VT	R2450VT S2000	S2100 T2000
THERMAL PROTECTION	TC 248°F (120°C)			
CERTIFICATION	cULus E174023 for damp locations			
WARRANTY	5 years on socket and 10 years on magnetic transformer.			



CODIFICATION EXAMPLE



ORDERING CODE

MODEL	SERIES	HEIGHT	TRANSFORMER	VOLTAGE
IT	2000	C	M	
IT Remodel	2000 4" Series	C Short	M Magnetic	120 Volts 2 277 Volts 3 347 Volts

