



# Contractor Pack (6 units)

4 inch Series

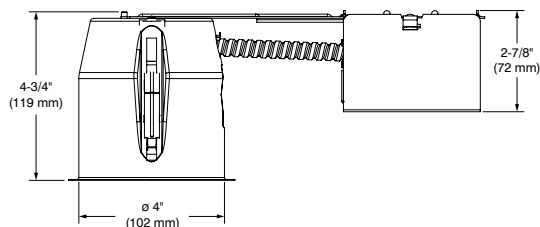
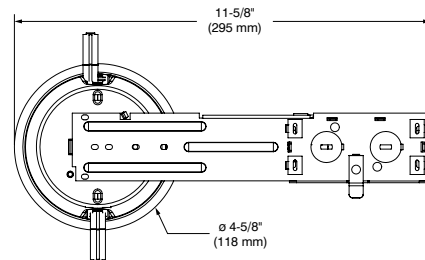
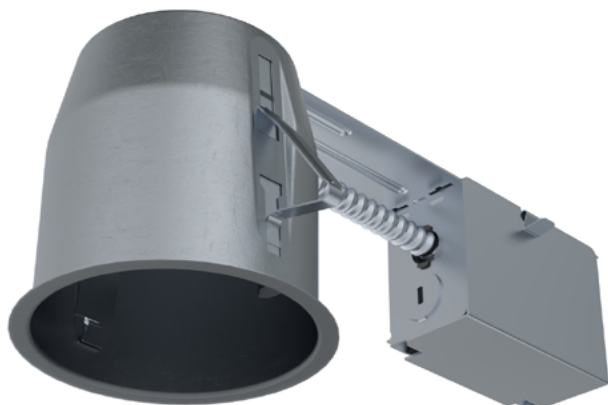
Project \_\_\_\_\_

Notes \_\_\_\_\_

Fixture type \_\_\_\_\_

Date \_\_\_\_\_

## Complete Unit: PAR16 and PAR20 IC Air Tight Remodel Housing with Trim



### HOUSING SPECIFICATIONS

HOUSING DETAILS	Galvanized Steel Approved for installation in insulated ceiling with direct contact to insulating material (except polyurethane) Below-ceiling accessible	
SOCKET	Medium Base (E26)	
JUNCTION BOX	Convenient 16 in <sup>3</sup> volume for connexions 1/2" and 3/4" Romex wiring knockouts	
MOUNTING	<b>Cutout diameter: <math>\varnothing</math> 4-1/4" (108 mm)</b> Can fit in ceilings of 1/2" (13 mm) up to 1-3/8" (35 mm) thick Requires a 6" (152 mm) clearance beyond the ceiling level No light leakage	
SOURCE	<b>LED PAR16 Lamp</b> 12W MAX <b>LED PAR20 Lamp</b> 12W MAX	
COMPATIBLE TRIMS	<b>PAR16</b> X4001	<b>PAR20</b> X4004
VOLTAGE	120V/277V	
CERTIFICATION	ETL listed for damp locations	
WARRANTY	1 year limited warranty	



# Contractor Pack (6 units)

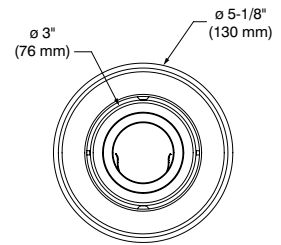
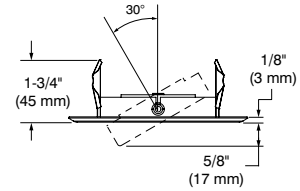
4 inch Series



## Complete Unit: PAR16 and PAR20 IC Air Tight Remodel Housing with Trim

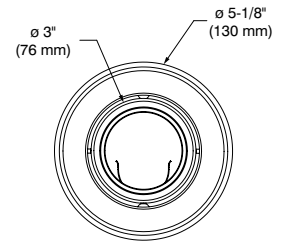
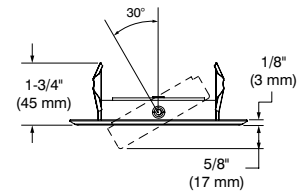
### PAR16 ADJUSTABLE TRIM SPECIFICATION (X4001)

TRIM DETAILS	Powder coat painted or plated die-formed steel. Different finishes available.
ADJUSTABILITY	Tilt : 30°
LAMP (maximum wattage)	<b>LED PAR16 12W MAX</b>  If you want to use the dimming option, please refer regularly to the lamp manufacturer compatibility list.
CEILING CUTOUT	<b>ø 4-3/8" (110 mm)</b>
CERTIFICATION	ETL listed for damp locations
WARRANTY	1 year limited warranty



### PAR20 ADJUSTABLE TRIM SPECIFICATION (X4004)

TRIM DETAILS	Powder coat painted or plated die-formed steel. Different finishes available.
ADJUSTABILITY	Tilt: 30°
LAMP (maximum wattage)	<b>LED PAR20 12W MAX</b>  If you want to use the dimming option, please refer regularly to the lamp manufacturer compatibility list.
CEILING CUTOUT	<b>ø 4-3/8" (110 mm)</b>
CERTIFICATION	ETL listed for damp locations
WARRANTY	1 year limited warranty





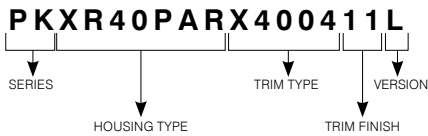
# Contractor Pack (6 units)

4 inch Series

**Complete Unit:**  
PAR16 and PAR20 IC Air Tight Remodel Housing with Trim



### CODIFICATION EXAMPLE



### ORDERING CODE for complete unit

SERIE	HOUSING TYPE	TRIM TYPE	TRIM FINISHES	VERSION
<b>PK</b>	<b>XR40PAR</b>			<b>L</b>
<b>PK</b>	<b>XR40PAR</b> Remodel Housing 4 inches Series	<b>X4001</b> PAR16 Adjustable <b>X4004</b> PAR20 Adjustable	<b>11</b> Matte White <b>13</b> Satin Nickel <b>22</b> Matte Black	<b>L</b>