

CA3600U

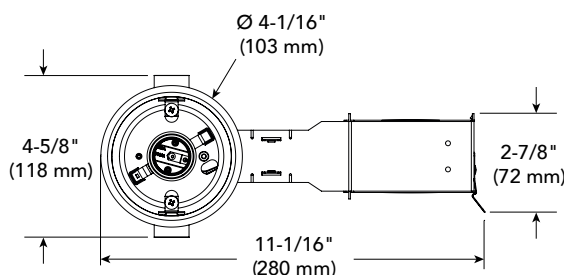
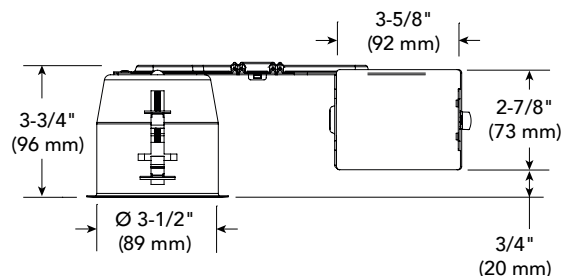
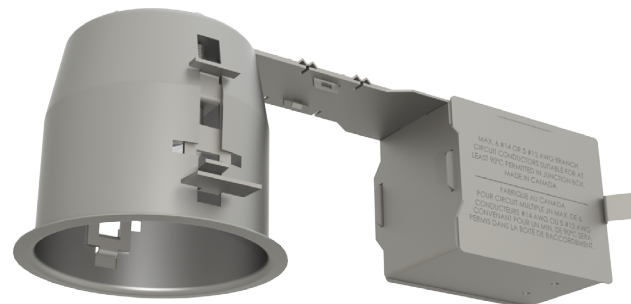
3-1/2" PAR20 Series

Remodel Housing for PAR20 Lamp

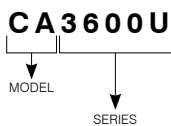
Project	
Notes	
Fixture Type	
Date	

SPECIFICATIONS

HOUSING DETAILS	18 gauge 0.051" (1.3 mm) thickness galvanized steel. Junction box can support up to 10 - 14 gauge wires or 8 - 12 gauge wires. Below-ceiling accessible.
SOCKET	Porcelain; medium base socket (E26). Pre-wired with 18 gauge wire SEW 200° connected to the junction box.
MOUNTING	Cutout diameter: Ø 3-5/8" (92 mm) Can fit in ceilings of 1/4" (6 mm) up to 7/8" (22 mm) thick. Requires a 4" (103 mm) clearance beyond the ceiling level. Must be installed 3" (73 mm) from any insulating material. Patented hook (PAT#CAN 2,088,648 and #USA 5,377,088) for ease of installation and a perfect fit to ceiling. No light leakage.
LIGHT SOURCE	PAR20 Halogen Lamp 50W MAX Although LED PAR20 works properly in this product, it may be longer than the halogen lamp it replaces. As a result, the lamp may protrude from the lighting fixture.
COMPATIBLE TRIMS	A3600 A3700 B3600
VOLTAGE	120V Volts (CAN & USA)
THERMAL PROTECTION	TC 212°F (100°C)
CERTIFICATION	cULus E174023 for damp locations
WARRANTY	5 years on socket.



CODIFICATION EXAMPLE



ORDERING CODE

MODEL	SERIES
CA	3600U
CA Remodel Housing for PAR20 Lamp	3600U Universal 3-1/2" PAR20 Series

