
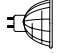







**FEUILLE DE SPÉCIFICATION**

**PROJET No:**


**BOÎTIER DE TYPE "NON IC"**

**NW2000CM** 120/12V  
**NW2000CM2** 277/12V  
**NW2000CM3** 347/12V

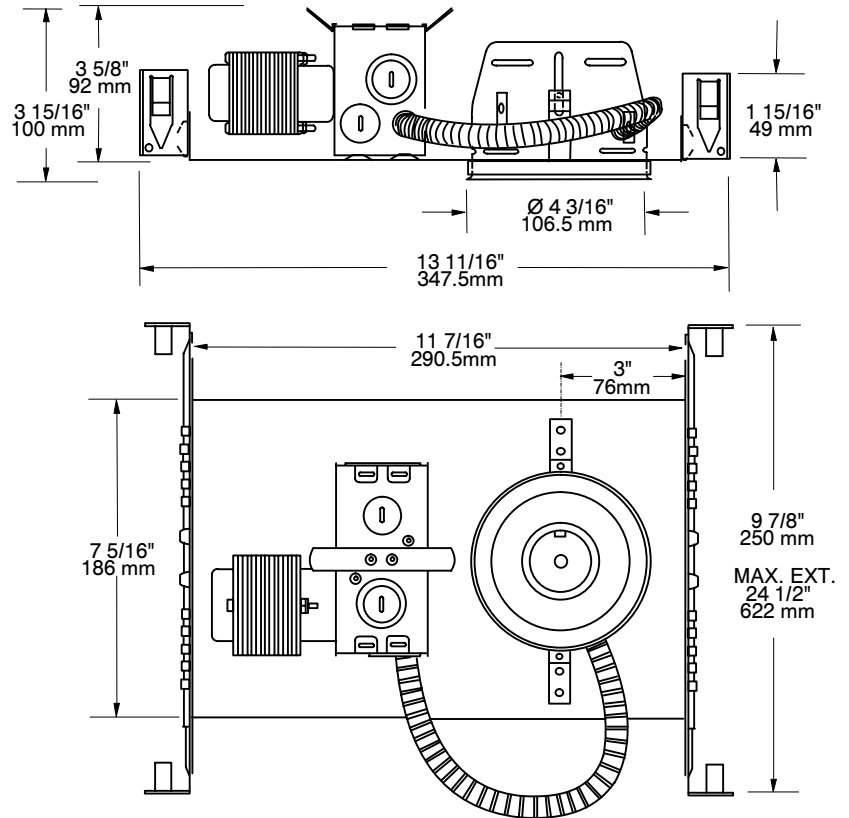
	<b>oui</b>
<b>Voltage</b>	<b>120, 277 or 347 VOLTS</b>
	<b>12 V 50W max.</b>
	
	
	
	<b>EC 50M 120V / 12V</b>
	<b>EC 50M 277V / 12V</b>
	<b>EC 50M 347V / 12V</b>
	<b>T°C 120°C No 031</b>
	<b>E 174023</b>

E Électronique M Magnétique C Court L Long

**FINITIONS DISPONIBLES :**  
 T2000, T2000V, T2010V, R2000  
 T2030V, T2000VL, T2010VL, T2030VL

 **Perçage : 4 1/4" (107 mm)**

NOTES:  
 Accès facile sous le plafond  
 Pour plafond sans isolation.  
 Transformateur magnétique  
 disponible en 277/12V et 347/12V



**PROJET**

Votre projet : \_\_\_\_\_

\_\_\_\_\_

\_\_\_\_\_

Représentant: \_\_\_\_\_