
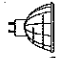
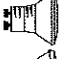



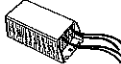



FEUILLE DE SPÉCIFICATION

PROJET No:

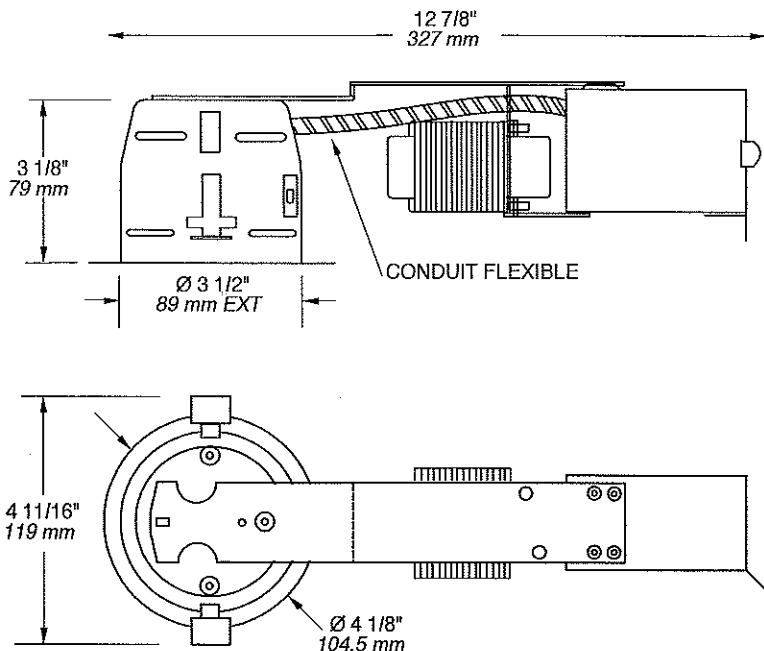
BOÎTIER DE TYPE "NON IC"


IT3000CM 120/12V
IT3000CM2 277/12V
IT3000CM3 347/12V

| | |
|--|------------------------------|
|  | oui |
| VOLTAGE | 120, 277 or 347 VOLTS |
|  | 12 V 35W max. |
|  | |
|  | |
|  | |
|  | EC 35M 120V / 12V |
| | EC 50M 277V / 12V |
| | EC 50M 347V / 12V |
|  | |
|  | T°C 120°C No 031 |
| Longueur du BX. | 6 1/2" (165 mm) |
| Numéro UL | E 174023 |

E Électronique M Magnétique C Court L Long

FINITIONS DISPONIBLES :
 T3000, T3100, T3200, T3250, T3260, T3300



 **Perçage : 3 5/8" (92 mm)**

NOTES:
 Accès facile sous le plafond
 Pour plafond sans isolation.
 Transformateur magnétique
 disponible en 277/12V et 347/12V



PROJET

Votre projet : _____

Représentant: _____