
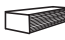

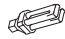




# SPECIFICATION SHEET

## 6" COMPACT FLUORESCENT SERIES

# NWF6H

### NEW CONSTRUCTION HOUSING FOR HORIZONTAL LAMP

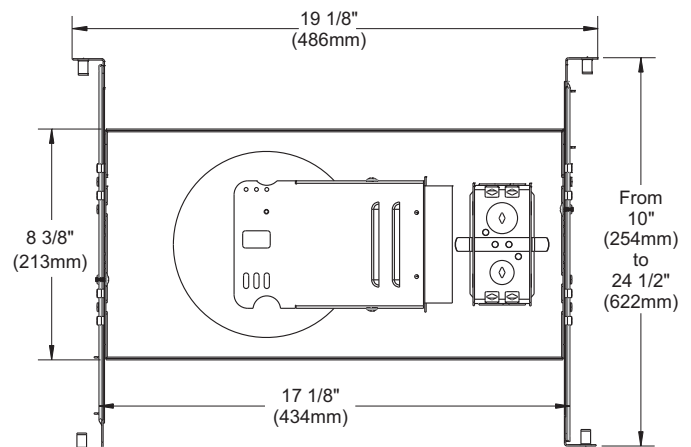
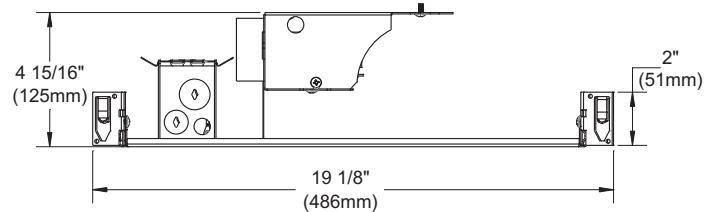
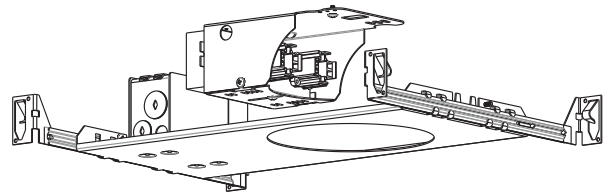
	<b>YES</b>	
<b>Damp location</b>		
	<b>ÉLECTRONIC BALLAST</b>	 <b>E175084</b>
<b>Voltage</b>	<b>120 VOLTS (CAN &amp; USA.)</b> <b>277 VOLTS (USA.)</b> <b>347 VOLTS (CANADA)</b>	
	<b>13W to 32W</b>	13W : G24q-1 4 PIN DTT 18W : G24q-2 4 PIN DTT 26W : G24q-3 4 PIN DTT 32W : GX24q-3 4 PIN TTT
<b>Compact Fluorescent</b>		
	<b>6 3/4" (171mm)</b>	
<b>OD Cut</b>	<b>Housing and trim assembly overall dimensions:</b> Height : 7 3/16" (183mm) Length : 17 3/16" (437mm) Width : 8 1/2" (216mm) with bars : 10" (254mm)	
		
<b>Dimensions</b>		


#### CODES :

NWF6H <u>U</u> 13	2 X 13W	120 to 277 VOLT <u>U</u> NIVERSAL BALLAST
NWF6H <u>U</u> 18	2 X 18W	
NWF6H <u>U</u> 26	2 X 26W	
NWF6H <u>U</u> 13S	1 X 13W	
NWF6H <u>U</u> 18S	1 X 18W	
NWF6H <u>U</u> 26S	1 X 26W	
NWF6H <u>U</u> 32S	1 X 32W	
NWF6H <u>3</u> 13	2 X 13W	347 VOLT BALLAST (FOR CANADA ONLY)
NWF6H <u>3</u> 18	2 X 18W	
NWF6H <u>3</u> 26	2 X 26W	
NWF6H <u>3</u> 13S	1 X 13W	
NWF6H <u>3</u> 18S	1 X 18W	
NWF6H <u>3</u> 26S	1 X 26W	
NWF6H <u>3</u> 32S	1 X 32W	
NWF6H <u>D</u> 18	2 X 18W	120 VOLT <u>D</u> IMMABLE BALLAST
NWF6H <u>D</u> 26	2 X 26W	
NWF6H <u>D</u> 18S	1 X 18W	
NWF6H <u>D</u> 26S	1 X 26W	
NWF6H <u>D</u> 32S	1 X 32W	
NWF6H <u>D</u> 18 <u>2</u>	2 X 18W	277 VOLT DIMMABLE BALLAST (FOR U.S.A. ONLY)
NWF6H <u>D</u> 26 <u>2</u>	2 X 26W	
NWF6H <u>D</u> 18S <u>2</u>	1 X 18W	
NWF6H <u>D</u> 26S <u>2</u>	1 X 26W	
NWF6H <u>D</u> 32S <u>2</u>	1 X 32W	

#### COMPATIBLE TRIMS

FR6HO	FR6HOLB	FR6HOMW120	FR6HOW120
FR6HOLA	FR6HOM	FR6HOMW90	FR6HOW90



 **ENERGY STAR® Requirements**  
**120 Volt ONLY**

- Lamp with a rated life of 10 000 hours or more, in these colors : 2700K, 3000K, 3500K or 4100K.
- Combine housing with one of the following trims :

Generic lamp designation :

CFQ13W/G24q	CFQ26W/G24q	FR6HO	FR6HOMW120
CFQ18W/G24q	CFTR26W/GX24q	FR6HOLA	FR6HOMW90
CFTR18W/GX24q	CFTR32W/GX24q	FR6HOLB	FR6HOW120
		FR6HOM	FR6HOW90

#### TECHNICAL SPECIFICATIONS

##### HOUSING FEATURES

Galvanized steel.  
Preset socket assembly and keyhole on socket assembly for easier installation.  
Below-ceiling accessible.

##### LISTINGS

UL-cUL listed for through branch wiring and damp location.

##### LOCKING SYSTEM

Perfect fit into ceiling.  
No light leak.  
Hooks PAT#CAN.2.088.648 and #USA.5.377.088  
Takes up to 7/8" thick ceiling.

##### SOCKET

High temperature-rated.  
130°C instead of 90°C.  
Stainless steel contacts.

##### MOUNTING BARS

Locked into place and adjustable from 10" to 24 1/2" using the integral T-Bars tabs. May be installed in trusses or suspended ceilings.

##### BALLAST

120V/277V Class P HPF Electronic ballast. **(347V HPF Electronic ballast, available in Canada. For ordering change U to 3.)**  
Program start without flickering  
10% THD and end of life lamp protection, 5 years warranty.

##### DIMMING CAPABILITY

**18W +**  
When ordering a dedicated dimmable ballast, in product codes change «U» to «D» on 120V.  
For 277V dimmable, change «U» to «D» and add suffix «2».  
Ballast type : Advance Mark X.  
N.B. Dimmable ballast are dedicated to either 120 or 277V.