
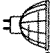







# SPECIFICATION SHEET

"NON-IC" NEW CONSTRUCTION TYPE HOUSING


NW2675F

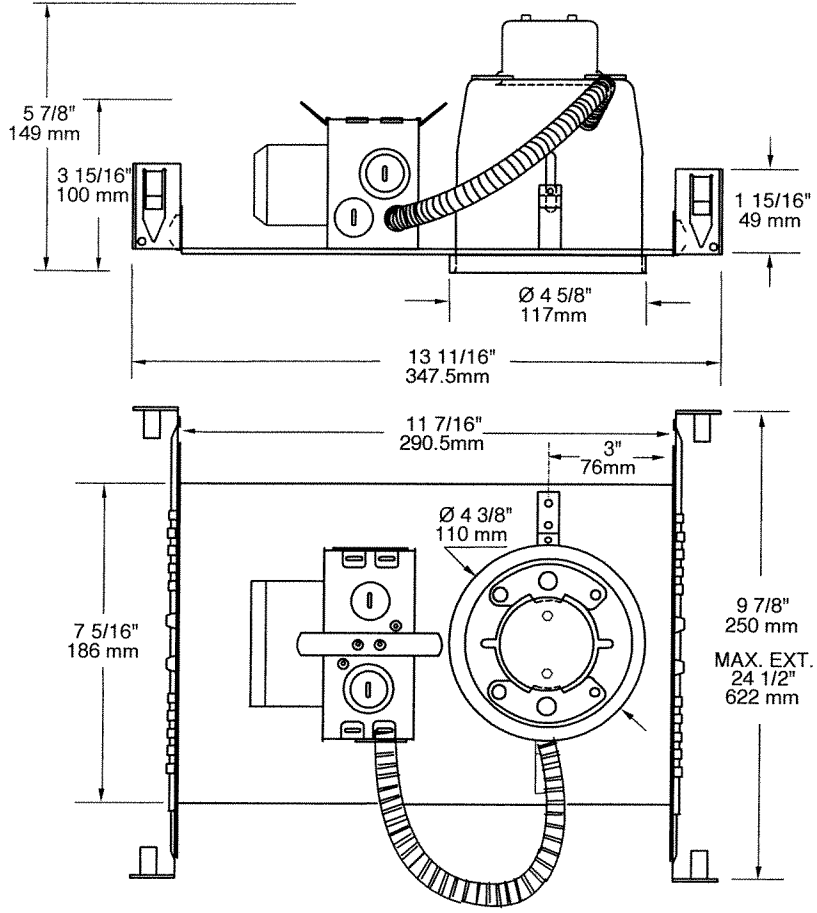
**PROJECT No:**

-  \_\_\_\_\_
- VOLTAGE** 120 VOLTS \_\_\_\_\_
-  \_\_\_\_\_
-  \_\_\_\_\_
-  \_\_\_\_\_
-  \_\_\_\_\_
-  \_\_\_\_\_
-  \_\_\_\_\_
- Double top** \_\_\_\_\_
- UL number : E 175084 \_\_\_\_\_

**E** Electronic **M** Magnetic **C** Short **L** Long

**AVAILABLE TRIMS**  
B2675

 **OD Cut : 4 5/8" (118 mm)**



## TECHNICAL SPECIFICATIONS

<p><b>HOUSING FEATURES</b> Galvanized steel Preset socket assembly and Keyhole on socket assembly for easier installation Below ceiling accessible See specs housing section</p>	<p><b>LOCKING SYSTEM</b> Perfect fit to ceiling No light leak Hooks PAT#CAN.2.088.648 and #USA.5.377.088 Take up to 7/8" thick ceilings</p>	<p><b>MOUNTING BARS</b> Adjustable and lockable from 10" to 24" lockable integral T-Bar tabs May be hung from trusses or suspended ceilings</p>	<p><b>BALLAST</b> 120V Class P HPF Magne- tic ballast instant start 2 Year Warranty</p> <p><b>SOCKET</b> High temperature-rated 130° C instead of 90° C Stainless Steel contacts</p>	<p><b>LISTINGS</b> UL-cUL Listed for through branch wiring and damp location</p>
--	---	---	--	--

Your Project: \_\_\_\_\_

Representative: \_\_\_\_\_

