
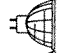


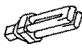




SPECIFICATION SHEET

"NON-IC" NEW CONSTRUCTION TYPE HOUSING


NW2000LF

PROJECT No:

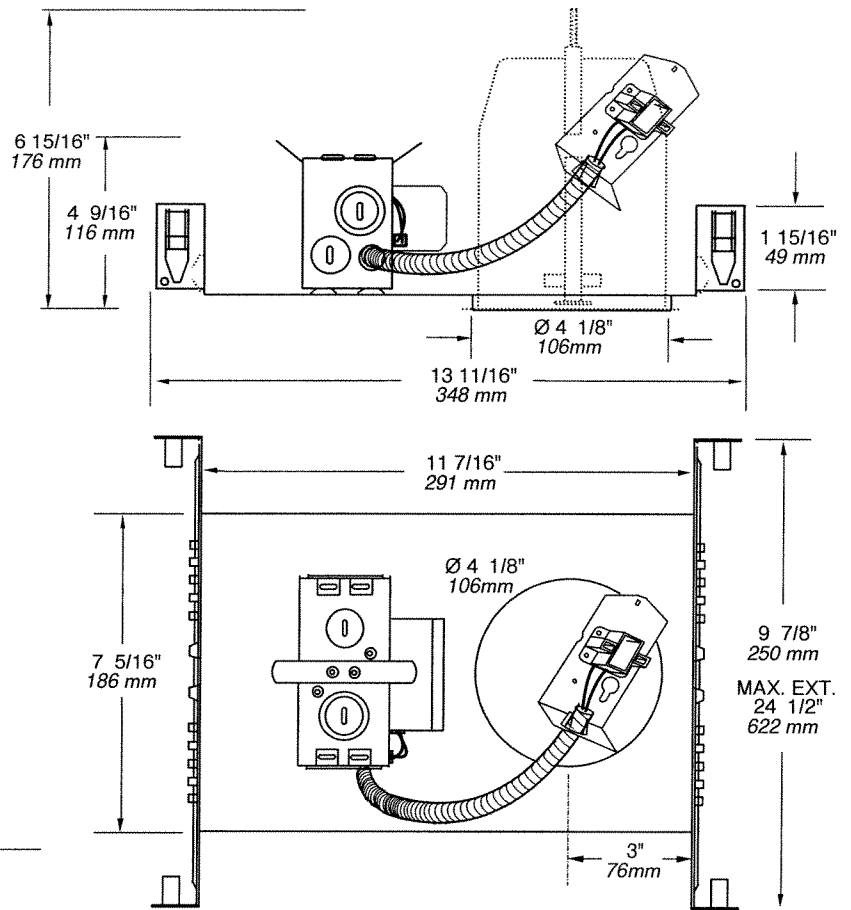
	_____
	yes
VOLTAGE	120 VOLTS
	_____
	_____
	_____
	1 x13W GX23-2 2PIN DTT
	H.P.F. Magnetic Ballast
	_____
Double top	_____
UL number :	E 175084

E Electronic **M** Magnetic **C** Short **L** Long

AVAILABLE TRIMS
A2400S, A2401S, A2450S, A2451S

 **OD Cut : 4 1/4" (107 mm)**

- 1 x13W G24q1 2PIN DTT
- 1 x18W G24q-2 4PIN TTT
- 1 x26/32W G24q-3 4PIN TTT



TECHNICAL SPECIFICATIONS

HOUSING FEATURES
Galvanized steel
Preset socket assembly and
Keyhole on socket assembly
for easier installation
Below ceiling accessible
See specs housing section

LOCKING SYSTEM
Perfect fit to ceiling
No light leak
Hooks PAT#CAN.2.088.648
and #USA.5.377.088
Take up to 7/8" thick ceilings

MOUNTING BARS
Adjustable and lockable
from 10" to 24" lockable
integral T-Bar tabs
May be hung from trusses
or suspended ceilings

BALLAST
120V Class P HPF Magne-
tic ballast instant start
2 Year Warranty

SOCKET
High temperature-rated
130° C instead of 90° C
Stainless Steel contacts

LISTINGS
UL-cUL Listed for through
branch wiring and damp location

Your Project: _____

Representative: _____

