
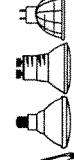






# SPECIFICATION SHEET

**PROJECT No:**

"IC" TYPE HOUSING


**ISF2000L318**  
**ISF2000LU18**

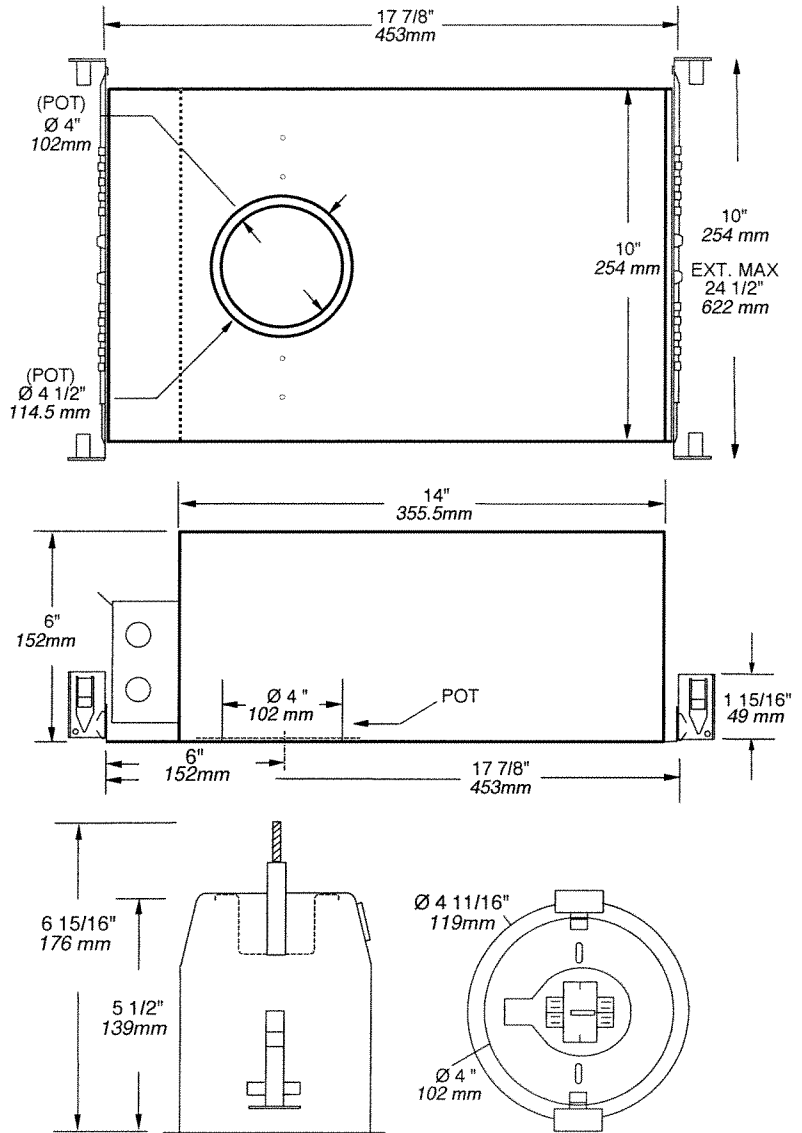
	_____
Voltage	yes _____ 120 / 277 / 347 VOLTS _____ _____
	_____
	1 x 18W G24q-1 4PIN TTT _____
	_____
	Electronic Ballast _____
	no _____
Double top	no _____
UL number	E 175084 _____

**E** Electronic **M** Magnetic **C** Short **L** Long

## AIR TIGHT HOUSING

**AVAILABLE TRIMS**  
A2400S, A2401S, A2450S, A2451S

 **OD Cut : 4 1/4" (107 mm)**



## TECHNICAL SPECIFICATIONS

**HOUSING FEATURES**  
Galvanized steel  
Preset socket assembly and Keyhole on socket assembly for easier installation  
Below ceiling accessible  
See specs housing section

**LOCKING SYSTEM**  
Perfect fit to ceiling  
No light leak  
Hooks PAT#CAN.2.088.648 and #USA.5.377.088  
Take up to 7/8" thick ceilings

**REFLECTOR**  
0,04" aluminium reflector with Low Iridescent Semi Specular Clear finish

**MOUNTING BARS**  
Adjustable and lockable from 10" to 24" lockable integral T-Bar tabs  
May be hung from trusses or suspended ceilings

**SOCKET**  
High temperature-rated 130° C instead of 90° C  
Stainless Steel contacts

**BALLAST**  
120V thru 277V Class P HPF Electronic ballast  
347V HPF Elect. ballast\*  
**(\*available in Canada For ordering change U to 3**  
Program start without flickering  
10% THD and End of life lamp protection, 5 Year Warranty

**LISTINGS**  
UL-cUL Listed for through branch wiring and damp location  
  
For IC Type Housing Comply with Washington States (ASTM#E283) Energy code

Your Project: \_\_\_\_\_

Representative: \_\_\_\_\_

