









SPECIFICATION SHEET

"IC" TYPE HOUSING


ISF2000313 - ISF2000318
ISF2000U13 - ISF2000U18

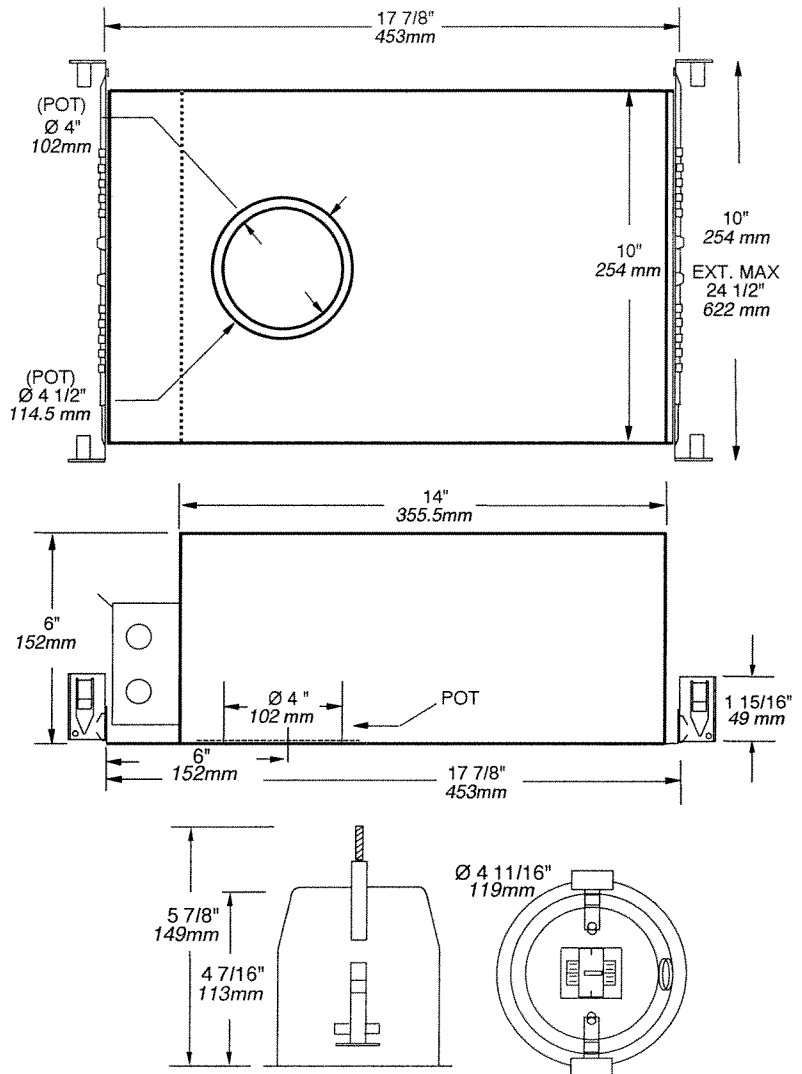
PROJECT No:

	yes
Voltage	120 / 277 / 347 VOLTS
	
	
	1 x 13W G24q-1 4PIN DTT
	1 x 18W G24q-2 4PIN TTT
	
	Electronic Ballast
	no
Double top	no
UL number	E 175084
E Electronic M Magnetic C Short L Long	

AIR TIGHT HOUSING

AVAILABLE TRIMS
 A2000V, A2000VL, A2000VLS, A2000VS
 A2010V, A2010VL, A2010VLS, A2010VS

 OD Cut : 4 1/4" (107 mm)



TECHNICAL SPECIFICATIONS

HOUSING FEATURES
 Galvanized steel
 Preset socket assembly and Keyhole on socket assembly for easier installation
 Below ceiling accessible
 See specs housing section

LOCKING SYSTEM
 Perfect fit to ceiling
 No light leak
 Hooks PAT#CAN.2.088.648 and #USA.5.377.088
 Take up to 7/8" thick ceilings

REFLECTOR
 0,04" aluminium reflector with Low Iridescent Semi Specular Clear finish

MOUNTING BARS
 Adjustable and lockable from 10" to 24" lockable integral T-Bar tabs
 May be hung from trusses or suspended ceilings

SOCKET
 High temperature-rated 130° C instead of 90° C
 Stainless Steel contacts

BALLAST
 120V thru 277V Class P
 HPF Electronic ballast
 347V HPF Elect. ballast*
 (*available in Canada
 For ordering change U to 3
 Program start without flickering
 10% THD and End of life lamp protection, 5 Year Warranty

LISTINGS
 UL-cUL Listed for through branch wiring and damp location

For IC Type Housing
 Comply with Washington States (ASTM#E283) Energy code
 Comply with California State Title 24 Energy code (Add "W" to code) Airtight

Your Project: _____

Representative: _____

