

ÉCLAIRAGE

**P R I O R I**  
L I G H T I N G

COMMERCIAL AND RESIDENTIAL COLLECTION

## 3 1/2" Trims MR16 - GU10/GZ10



X3506  
not available in  
Satin Nickel finish.



### TRIM FINISHES

	Code
White	01
Matte White	11
Satin Nickel	13

### OUTSIDE DIAMETERS

Trims	
3 1/2"	4"
Ø 4 7/8" (124 mm)	Ø 4 15/16" (125 mm)
Ø 4 7/16" (113 mm) [X3503]	
Ø 4 1/4" (108 mm) [X3502]	

### HOUSINGS

### LAMPS

HOUSINGS	LAMPS	
	MR16	GU10/GZ10 or PAR20
Remodel		
New Construction		
Insulated Ceiling		

### 4" Trims MR16 - GU10/GZ10



### 4" Trims PAR20

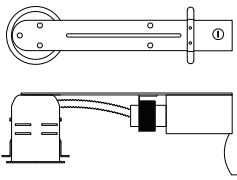


LAMPS	HOUSINGS FOR 3 1/2" TRIMS			HOUSINGS FOR 4" TRIMS		
	Remodel	New Construction	Insulated Ceiling	Remodel	New Construction	Insulated Ceiling
MR16 50 W	XR35MR16M	XN35MR16M	XIC35MR16M	XR40MR16M	XN40MR16M	XIC40MR16M
GU10/GZ10 50 W	XR35GU	XN35GU	XIC35GU	XR40GU	XN40GU	XIC40GU
PAR20 50 W	-	-	-	XR40PAR20	XN40PAR20	XIC40PAR20

# HOUSINGS

## REMODEL

### XR35MR16M (3 1/2")



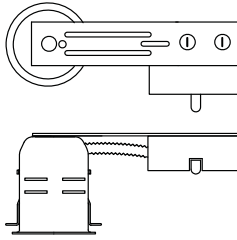
#### TECHNICAL INFO

CAN HEIGHT: 4 1/2" (114 mm)  
 FRAME WIDTH: 4 5/8" (117 mm)  
 FRAME LENGTH: 14 1/4 (362 mm)  
 120V/ 12v

#### CUT OUT

XR35: 3 5/8" (92 mm)

### XR35GU (3 1/2")



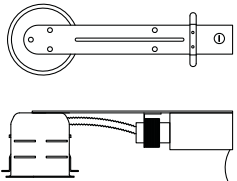
#### TECHNICAL INFO

CAN HEIGHT: 4 1/2" (114 mm)  
 FRAME WIDTH: 4 5/8" (117 mm)  
 FRAME LENGTH: 10 1/2 (267 mm)  
 120V

#### CUT OUT

XR35: 3 5/8" (92 mm)

### XR40MR16M (4")



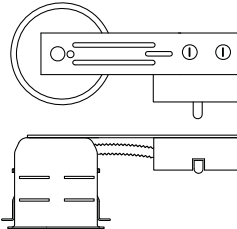
#### TECHNICAL INFO

CAN HEIGHT: 4 1/2" (114 mm)  
 FRAME WIDTH: 5 1/4" (133 mm)  
 FRAME LENGTH: 14 1/2 (368 mm)  
 120V/ 12v

#### CUT OUT

XR40: 4 1/4" (107 mm)

### XR40GU (4") XR40PAR20 (4")



#### TECHNICAL INFO

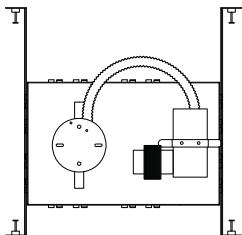
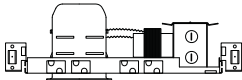
CAN HEIGHT: 5" (127 mm)  
 FRAME WIDTH: 5 1/4" (133 mm)  
 FRAME LENGTH: 12" (305 mm)  
 120V

#### CUT OUT

XR40: 4 1/4" (107 mm)

## NEW CONSTRUCTION

### XN35MR16 (3 1/2") XN40MR16 (4")



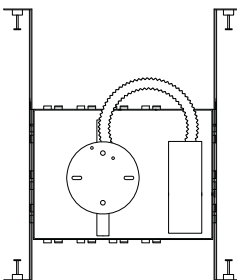
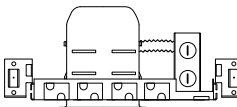
#### TECHNICAL INFO

CAN HEIGHT: 5 3/8" (136 mm)  
 FRAME WIDTH: 8" (203 mm)  
 FRAME LENGTH: 12 5/8 (321 mm)  
 120V/ 12v

#### CUT OUT

XN35: 3 5/8" (92 mm)  
 XN40: 4 1/4" (108 mm)

### XN35GU (3 1/2") XN40GU (4") XN40PAR20 (4")



#### TECHNICAL INFO

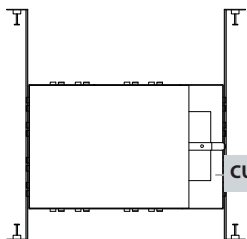
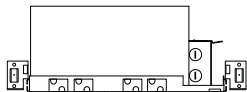
CAN HEIGHT: 5 3/8" (136 mm)  
 FRAME WIDTH: 6 1/2" (165 mm)  
 FRAME LENGTH: 9 (229 mm)  
 120V

#### CUT OUT

XN35: 3 5/8" (92 mm)  
 XN40: 4 1/4" (108 mm)

## INSULATED CEILING

### XIC35MR16M (3 1/2") XIC40MR16M (4")



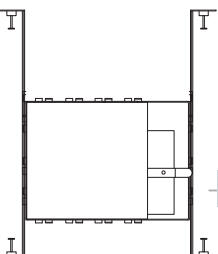
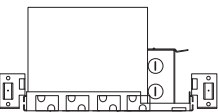
#### TECHNICAL INFO

CAN HEIGHT: 5 3/8" (136 mm)  
 FRAME WIDTH: 9 1/2" (241 mm)  
 FRAME LENGTH: 13 1/8 (333 mm)  
 120V/ 12v

#### CUT OUT

XIC35: 3 5/8" (92 mm)  
 XIC40: 4 1/4" (108 mm)

### XIC35GU (3 1/2") XIC40GU (4") XIC40PAR20 (4")

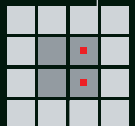


#### TECHNICAL INFO

CAN HEIGHT: 5 3/8" (136 mm)  
 FRAME WIDTH: 6 1/2" (165 mm)  
 FRAME LENGTH: 9" (229 mm)  
 120V

#### CUT OUT

XIC35: 3 5/8" (92 mm)  
 XIC40: 4 1/4" (108 mm)



**PRIORI Lighting**  
 1009, rue du Parc Industriel  
 Saint-Jean-Chrysostome  
 Québec, Canada G6Z 1C5

Phone: 1 888 839-4624  
 Fax: 1 877 839-7057