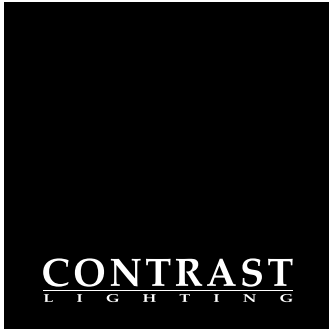



MODUL-AIM



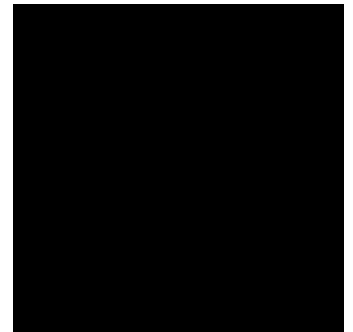
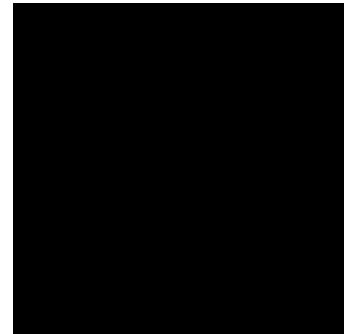


M



TABLE OF CONTENTS

FEATURES AND BENEFITS	5
ASSEMBLED MODELS	6
MODULARITY	7
LED STANDARD AND CRISPWHITE MODULES	8
WARM DIMMING AND COLOR TUNING MODULES	9
BEAMS AND REFLECTORS, AJUSTABILITY	10
DRIVERS	11
MODULAR UNIT	12
NEW CONSTRUCTION	13
REMODELER	14
INSULATING CEILING	15
ACCESSORIES AND TRIM FINISHES	18







FEATURES AND BENEFITS

- A TRUE MODULAR UNIT THAT LETS YOU CONFIGURE THE DESIRED SHAPE
- KEEP IT SIMPLE WITH AVAILABLE ASSEMBLED UNITS
- VIBRANT COLORS OFFERED IN MILLIONS OF ARRAY WITH COLOR TUNING OPTION
- CREATE AN ATMOSPHERE WITH WARM DIMMING OPTION ENABLING YOU TO DIM FROM 3,050K TO 1,800K
- LET YOUR WHITES STAND OUT WITH THE CRISPWHITE OPTION THAT SATURATES WARM COLORS FOR A CLEAN AND EFFECTIVE EFFECT PERFECT FOR RETAIL APPLICATIONS SUCH AS MERCHANDISING



ASSEMBLED MODELS



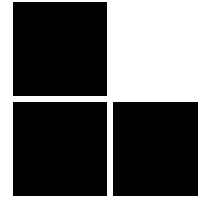
MOD1



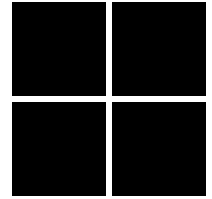
MOD2



MOD3



MODL



MODS

Assembled Modul-Aims are made of high quality powder coated galvanized steel. Install them in fixed or suspended ceiling with the universal supports and butterfly brackets included with the new construction or IC assembled units. Assembled units are also offered for remodel application in fixed ceilings with patent pending remodel hooks. Perfect fit to ceiling without any light leak.



REMODELER



NEW CONSTRUCTION



INSULATING CEILING
(Available only in 1 or 2 heads)

When you order an assembled model, your new construction and remodeler installation kits are included and shipped with the product .

Refer to page 14 to 17 for ordering code.

MODULARITY

YOUR IMAGINATION IS YOUR LIMIT!

Modular Concept

The cubic shape of modular base unit MOD1 enables configuration in all sorts of shapes in almost all directions.

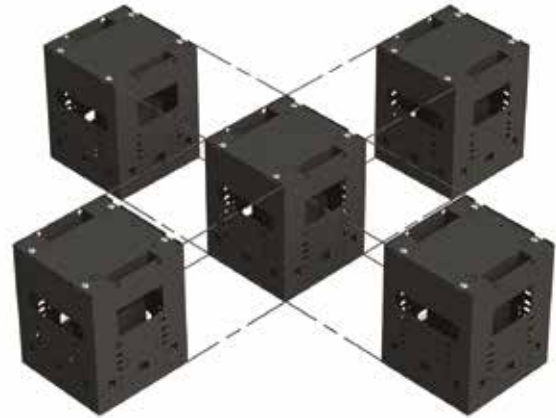
Use Remodeler, New Construction or suspension installation kits based on your application.

Installation Kits

Remodeler hooks accommodate up to 2" thick ceilings.

New Construction installation kits allow 5 units maximum in a row without extra suspension kits.

Installation kits are not included in Modular base units. They must be ordered separately based on your configuration. Refer to the Modul-Aim product configurator available at www.contrastlighting.com for more details



For more details on the accessories, refer to page 18.

STANDARD

Lumileds Luxeon CoB 1205, delivers a lumen maintenance greater than 70% after 50,000 hours of operation (L_{70}) at 97 CRI. It provides a high quality true color and a clean white light without hot spots. Color binning within 3 steps on MacAdam ellipse which surpasses ANSI binning requirements.

Offered in 2,700K, 3,000K, 3,500K and 4,000K.



CRISPWHITE

Lumileds LUXEON CoB 1205 with CrispWhite Technology delivers the warm saturated colors of high 90 + CRI solutions while creating the natural crisp whiteness required for merchandising.

Offered in 3,000K only.



WARM DIMMING

Lumenetix Araya DDM1 Dynamic Dimming Module delivers dimmable white light that warms as it dims reproducing dimming conditions of a halogen lamp. It allows the user to change the color temperature from 3,050K at full intensity to 1,800K at minimum intensity all this while ensuring a 90+ CRI over the full dimming range.



COLOR TUNING

Lumenetix Araya CTM1 Color Tuning Module allows the user to program millions of color combinations using a user-friendly Bluetooth application available on iOS mobile devices. The application allows programming of different scenes, colors, and color temperatures while the day-to-day control is ensured by standard 0-10V wall mounted dimmers. All this accomplished at 90+ CRI level.



BEAMS AND REFLECTORS

Create accent, general or ambient lighting with different beam options and light up your decor.

Choose among 4 beam options.

Available optical reflectors:

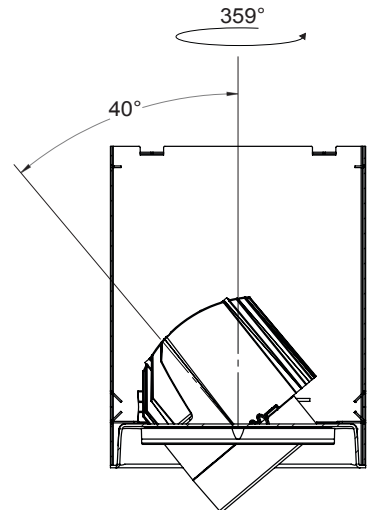
S:	Spot	→	15°
MS:	Medium Spot	→	19°
M:	Narrow Flood	→	32°
W:	Flood	→	45°

* Average beams shown. Consult ies files on our Website for more details.

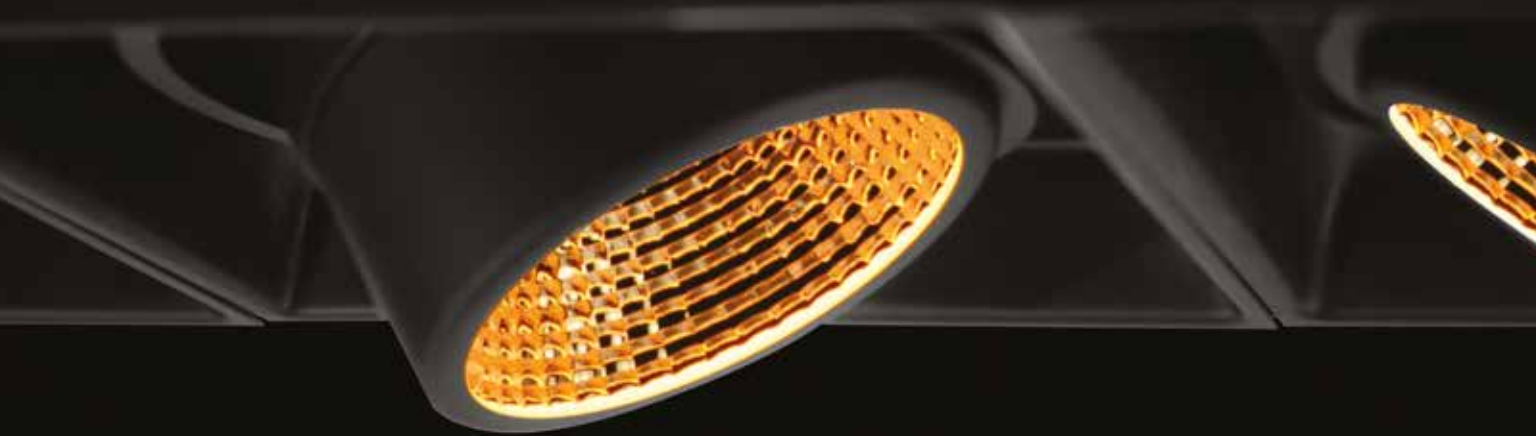
ADJUSTABILITY

Innovative adjustability design lets you aim the projector in any direction. Tilt the projector up to 40° and light up only what you want. Lock it in place with only one screw adjustment.

- Swivel: 359°
- 40° tilt
- Locking device



DRIVERS



Modul-Aim drivers offer you three types of dimming options

Modul-Aim standard and CrispWhite LED modules are offered in 2 performance levels:

- Performance 1: 21 watts, up to 1,370 lumens at 3,000K
- Performance 2: 41 watts, up to 2,398 lumens at 3,000K

Modul-Aim drivers offer you the choice of Electronic Low Voltage (ELV), 0-10V and Lutron's Ecosystem addressable dimming options. Each driver can accommodate 110V to 277V input for residential or commercial applications.

Lumenetix Warm Dimming and Color Tuning modules come with their specific drivers which accept 100 to 240V input and is controlled using 0-10V dimmers.

EcoSystem technology by Lutron is a control method for LEDs that provides addressing of individual fixtures this makes it easy to digitally assign occupancy sensors, daylight sensors, time clocks, manual controls and other controls to one or many fixtures without complicated wiring. Available only with performance 1 housings.

MODULAR UNIT



MOD1

Modular base unit (Patent Pending)

A true Modular design that let you configure your luminaire in any shapes for example: linear, L, Cross, staggered and in a square by simply assembling the number of units you need to create the desired shape.

ORDERING CODE for Modular Base Unit with Standard LED Engine

MODEL	FINISH	DRIVER	PERFORMANCE	COLOR TEMPERATURE	BEAM	
MOD1						
MOD1	Modular Base Unit	-11 Matte White	E ELV	1 1,267 Lumens (delivered)	-27 2,700K	S Spot 15°
		-22 Matte Black	D 0-10V	2 2,180 Lumens (delivered)	-30 3,000K	MS Medium Spot 19°
		A Lutron Ecosystem Addressable		-35 3,500K	M Narrow Flood 32°	
			-40 4,000K	W Flood 45°		
└ (Available with Performance 1 only)						

ORDERING CODE for Modular Base Unit with CrispWhite Technology

MODEL	FINISH	DRIVER	PERFORMANCE	COLOR TEMPERATURE	BEAM	CRISPWHITE OPTION	
MOD1				-30		-C	
MOD1	Modular Base Unit	-11 Matte White	E ELV	1 1,195 Lumens (delivered)	-30 3,000K	S Spot 15°	-C CrispWhite Technology
		-22 Matte Black	D 0-10V	2 2,075 Lumens (delivered)		MS Medium Spot 19°	
		A Lutron Ecosystem Addressable				M Narrow Flood 32°	
						W Flood 45°	
└ (Available with Performance 1 only)							

ORDERING CODE for Modular Base Unit with Lumenetix Engine

MODEL	FINISH	LED ENGINE	BEAM
MOD1			
MOD1	Modular Base Unit	CT Color Tuning	M Narrow Flood 26°
		WD Warm Dimming	W Flood 41°

Installation kits, trim, mask and trimless mesh plate to be ordered separately based on your configuration.

NEW CONSTRUCTION

Assembled New Construction housing (Patent Pending)

Butterfly brackets and mounting bars included with assembled unit are perfect for fixed or suspended ceiling in a new construction.



NWMODL

ORDERING CODE for New Construction Unit with Standard LED Engine

MODEL	CONFIGURATION	FINISH	DRIVER	PERFORMANCE	COLOR TEMPERATURE	BEAM
NWMOD						
NWMOD New Construction	1 1 unit	-11 Matte White	E ELV	1 1,267 Lumens (delivered)	-27 2,700K	S Spot 15°
	2 2 units	-22 Matte Black	D 0-10V	2 2,180 Lumens (delivered) Lutron Ecosystem Addressable (Available with Performance 1 only)	-30 3,000K	MS Medium Spot 19°
	3 3 units				-35 3,500K	M Narrow Flood 32°
	L 3 units "L" shaped				-40 4,000K	W Flood 45°
	S 4 units square shape					

ORDERING CODE for New Construction Unit with CrispWhite Technology

MODEL	CONFIGURATION	FINISH	DRIVER	PERFORMANCE	COLOR TEMPERATURE	BEAM	CRISPWHITE OPTION
NWMOD					-30		-C
NWMOD New Construction	1 1 unit	-11 Matte White	E ELV	1 1,195 Lumens (delivered)	-30 3,000K	S Spot 15°	-C CrispWhite Technology
	2 2 units		D 0-10V	2 2,075 Lumens (delivered) Lutron Ecosystem Addressable (Available with Performance 1 only)		MS Medium Spot 19°	
	3 3 units	-22 Matte Black				M Narrow Flood 32°	
	L 3 units "L" shaped					W Flood 45°	
	S 4 units square shape						

ORDERING CODE for New Construction Unit with Lumenetix Engine

MODEL	CONFIGURATION	FINISH	LED ENGINE	BEAM
NWMOD				
NWMOD New Construction	1 1 unit	-11 Matte White	CT Color Tuning	M Narrow Flood 26°
	2 2 units	-22 Matte Black	WD Warm Dimming	W Flood 41°
	3 3 units			
	L 3 units "L" shaped			
	S 4 units square shape			

Installation kits, trim, mask and trimless mesh plate to be ordered separately based on your configuration.

REMODELER

Assembled Remodeler housing (Patent Pending)

Use assembled remodeler housing when renovating. The remodeler hooks (Patent Pending) facilitate installation by reducing ceiling-cut size.



REMOD2

ORDERING CODE for Remodel Unit with Standard LED Engine

MODEL	CONFIGURATION	FINISH	DRIVER	PERFORMANCE	COLOR TEMPERATURE	BEAM
REMOD						
REMOD Remodel	1 1 unit	-11 Matte White	E ELV	1 1,267 Lumens (delivered)	-27 2,700K	S Spot 15°
	2 2 units	-22 Matte Black	D 0-10V		-30 3,000K	MS Medium Spot 19°
	3 3 units		A Lutron Ecosystem Addressable (Available with Performance 1 only)	2 2,180 Lumens (delivered)	-35 3,500K	M Narrow Flood 32°
	L 3 units "L" shape				-40 4,000K	W Flood 45°
	S 4 units square shape					

ORDERING CODE or Remodel Unit with CrispWhite Technology

MODEL	CONFIGURATION	FINISH	DRIVER	PERFORMANCE	COLOR TEMPERATURE	BEAM	CRISPWHITE OPTION
REMOD					-30		-C
REMOD Remodel	1 1 unit	-11 Matte White	E ELV	1 1,195 Lumens (delivered)	-30 3,000K	S Spot 15°	-C CrispWhite Technology
	2 2 units		D 0-10V			MS Medium Spot 19°	
	3 3 units	-22 Matte Black	A Lutron Ecosystem Addressable (Available with Performance 1 only)	2 2,075 Lumens (delivered)		M Narrow Flood 32°	
	L 3 units "L" shape					W Flood 45°	
	S 4 units square shape						

ORDERING CODE for Remodel Unit with Lumenetix Engine

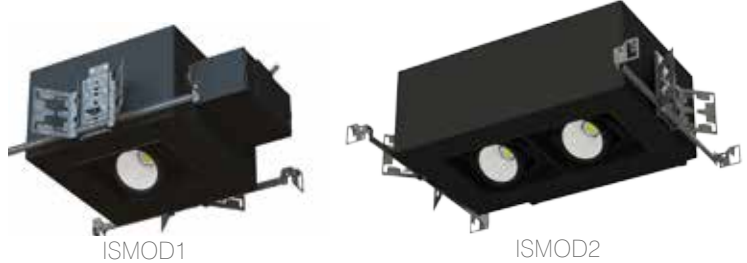
MODEL	CONFIGURATION	FINISH	LED ENGINE	BEAM
REMOD				
REMOD Remodel	1 1 unit	-11 Matte White	CT Color Tuning	M Narrow Flood 26°
	2 2 units	-22 Matte Black	WD Warm Dimming	W Flood 41°
	3 3 units			
	L 3 units "L" shape			
	S 4 units square shape			

Installation kits, trim, mask and trimless mesh plate to be ordered separately based on your configuration.

INSULATING CEILING

Assembled Insulating Ceiling Housing

Modul-Aim may be installed in direct contact with insulation (except polyurethane). Available in single or double heads it includes butterfly brackets and installation supports.



ORDERING CODE for Insulated Ceiling Unit with Standard LED Engine

MODEL	CONFIGURATION	FINISH	DRIVER	PERFORMANCE	COLOR TEMPERATURE	BEAM
ISMOD				1		
ISMOD Insulated Ceiling	1 1 unit	-11 Matte White	E ELV	1 1,267 Lumens (delivered)	-27 2,700K	S Spot 15°
	2 2 units	-22 Matte Black	D 0-10V		-30 3,000K	MS Medium Spot 19°
			A Lutron Ecosystem Addressable		-35 3,500K	M Narrow Flood 32°
					-40 4,000K	W Flood 45°

ORDERING CODE for Insulated Ceiling Unit with CrispWhite Technology

MODEL	CONFIGURATION	FINISH	DRIVER	PERFORMANCE	COLOR TEMPERATURE	BEAM	CRISPWHITE OPTION
ISMOD				1	-30		-C
ISMOD Insulated Ceiling	1 1 unit	-11 Matte White	E ELV	1 1,195 Lumens (delivered)	-30 3,000K	S Spot 15°	-C CrispWhite Technology
	2 2 units	-22 Matte Black	D 0-10V			MS Medium Spot 19°	
			A Lutron Ecosystem Addressable			M Narrow Flood 32°	
						W Flood 45°	

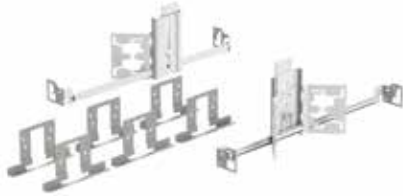
ORDERING CODE for Insulated Ceiling Unit with Lumenetix Engine

MODEL	CONFIGURATION	FINISH	LED ENGINE	BEAM
ISMOD				
ISMOD Insulated Ceiling	1 1 unit	-11 Matte White	CT Color Tuning	M Narrow Flood 26°
	2 2 units	-22 Matte Black	WD Warm Dimming	W Flood 41°

Installation kits, trim, mask and trimless mesh plate to be ordered separately based on your configuration.

TRIMS FINISHES

NEW CONSTRUCTION INSTALLATION KIT



REMODELER INSTALLATION KIT



SUSPENSION INSTALLATION KIT



AVAILABLE REFLECTORS

Only with standard engine and CrispWhite technology

For a Spot: 103737

For a Medium Spot: 103738

For a Narrow Flood: 103739

For a Flood: 316545

AVAILABLE LENSES

Clear (C):	103105
Frosted (F):	103189
Solite (S):	100741
Prismatic (P):	103824
Linear (L):	103823
Honeycombs (H):	103822

(Colored lenses available on request)



MATTE BLACK HOUSING (-22)

MATTE BLACK MASK (MASK1-22)

MATTE WHITE HOUSING (-11)

MATTE WHITE MASK (MASK1-11)



ACCESSORIES

MATTE BLACK TRIM (TRMOD3-22)

LED engines (Standard, CrispWhite, Warm Dimming, Color Tuning) are easily accessible for ease of maintenance.

Modul-Aim design enables you to add accessories such as lenses or reflectors below the ceiling even after the installation is completed.

ORDERING CODE for Trim

MODEL	CONFIGURATION	FINISH	
TRMOD			
TRMOD	1 1 unit	-11	Matte White
	2 2 units	-15	Metallic Grey
	3 3 units	-22	Matte Black
	L 3 units "L" shape		
	S 4 units square shape		

ORDERING CODE for Mask

MODEL	FINISH	
MASK1		
MASK1	-11	Matte White
	-22	Matte Black

ORDERING CODE for Mesh Plate(Trimless)

MODEL	CONFIGURATION	
SFMOD		
SFMOD	1	1 unit
	2	2 units
	3	3 units
	L	3 units "L" shape
	S	4 units square shape

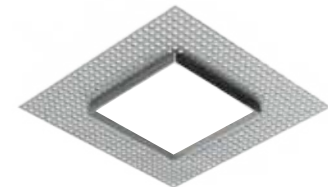
TRIM FINISHES



MASKS



TRIMLESS





CONTRASTE



CONTRAST

L I G H T I N G

CORPORATE HEADQUARTERS

1009, rue du Parc Industriel
Lévis (Québec) G6Z 1C5 Canada

Phone: 418 839-4624

Toll free: 1 888 839-4624

Fax: 418 839-7057

Toll free: 1 877 839-7057

info@contrastlighting.com

www.contrastlighting.com

